

Cabel type A: min. 3x1.5 mm²
 Cabel type B: min. 4x0.75 mm²
 Cabel type C: min. 3x0.8 mm
 Cabel type D: min. 2x0.8 mm (shielded)
 Cabel type E: min. 2x0.8 mm
 Cable type G: min. 4x0.8 mm
 Cable type H: min. 6x0.8 mm (shielded)

Control station must be supplied from separate group.
 The installation must be performed in accordance with the machine directive.

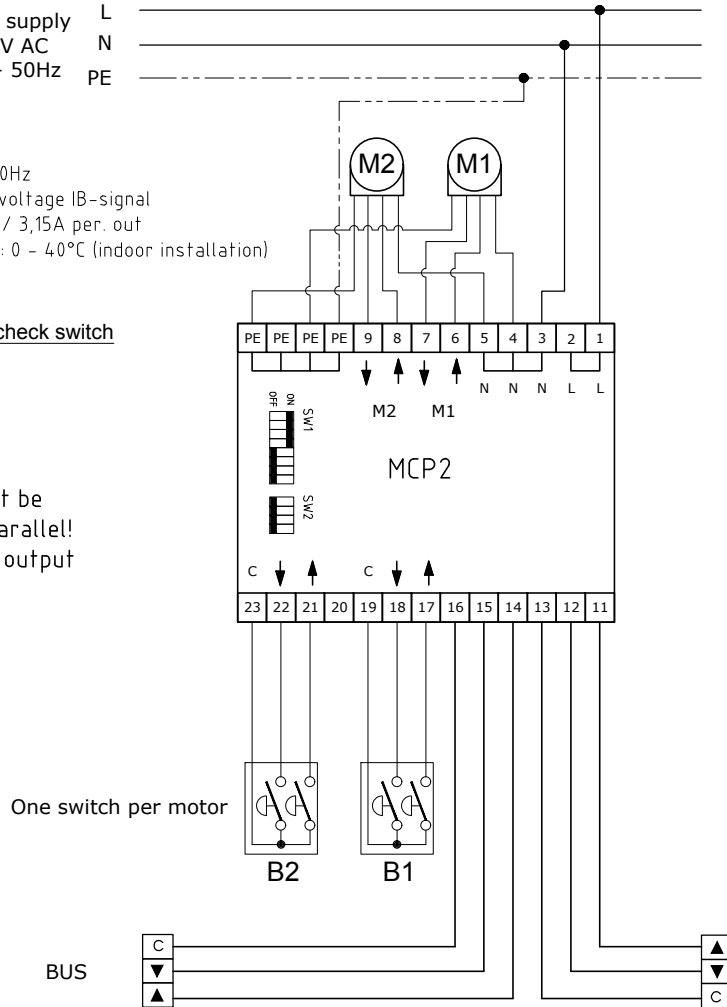
		Marketed by:	
		Blendex A/S Fischer-international	
Product: Principle diagram Sunsync 120B		www.blendex.dk www.fischer-international.pl	
Type Overview 2 zones	Scale:	Revision A: 07.11.16 B: C: D: E:	Product nr.:
	Date 23.02.16		STANDARD
	Sign.: KS		Drawing nr. 120B-01A

Power supply L
230V AC N
10A - 50Hz PE

- Data:
1. Voltage: 230V./ 10A 50Hz
 2. Control voltage: Low voltage IB-signal
 3. Motor out max. 250V. / 3,15A per. out
 4. Temperature interval: 0 - 40°C (indoor installation)

Notice! Remember to check switch settings!!

Notice!
Motors may not be connected in parallel!
One motor per output only!

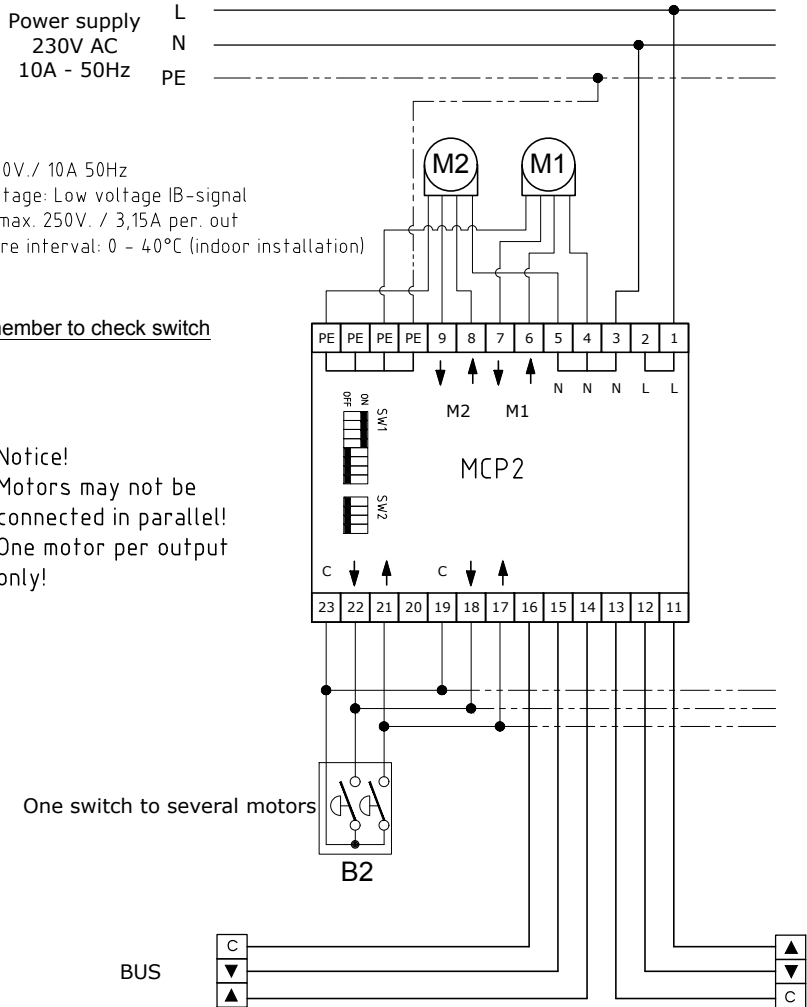


Power supply L
230V AC N
10A - 50Hz PE

- Data:
1. Voltage: 230V./ 10A 50Hz
 2. Control voltage: Low voltage IB-signal
 3. Motor out max. 250V. / 3,15A per. out
 4. Temperature interval: 0 - 40°C (indoor installation)

Notice! Remember to check switch settings!!

Notice!
Motors may not be connected in parallel!
One motor per output only!



Control station must be supplied from separate group.
The installation must be performed in accordance with the machine directive.

sunsync™

Marketed by:

Blendex A/S
Fischer-international

www.blendex.dk
www.fischer-international.de

Product: Principle diagram Sunsync 120B

Type
Connection diagram relay box MCP2

Scale:
Date 23.02.16
Sign.: KS

Revision
A: 12.01.17
B:
C:
D:
E:

Product nr.:

STANDARD

Drawing nr

120B-02A

Data:

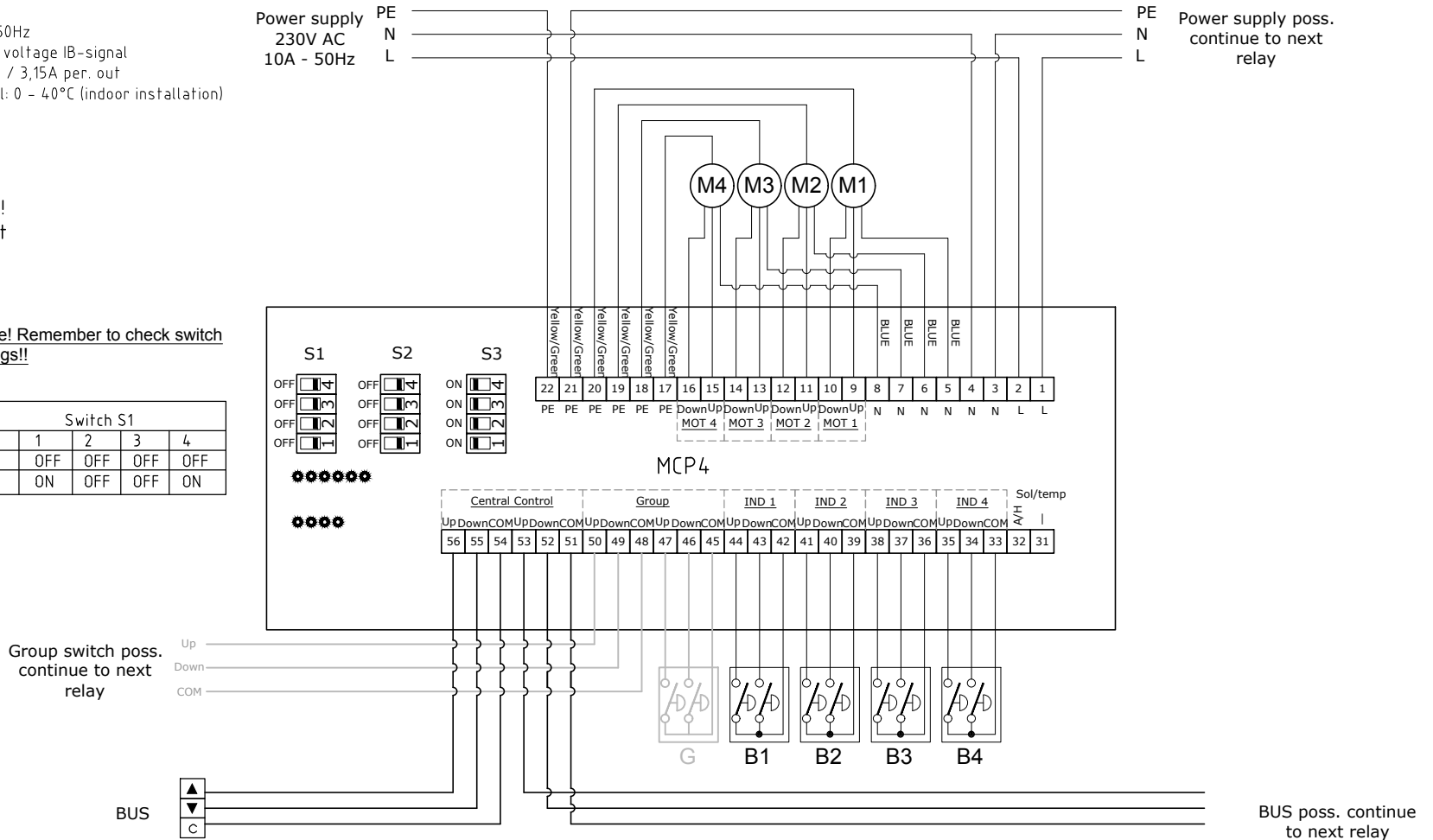
1. Voltage: 230V. / 10A 50Hz
2. Control voltage: Low voltage IB-signal
3. Motor out max. 250V. / 3,15A per. out
4. Temperature interval: 0 - 40°C (indoor installation)

Notice!

Motors may not be connected in parallel!
One motor per output only!

Notice! Remember to check switch settings!!

Switch S1				
Mode	1	2	3	4
Normal	OFF	OFF	OFF	OFF
IDS	ON	OFF	OFF	ON



Control station must be supplied from separate group.
The installation must be performed in accordance with the machine directive.

sunsync™

Marketed by:

Blendex A/S
Fischer-international

www.blendex.dk
www.fischer-international.de

Product: Principle diagram Sunsync 120B

Type
Connection diagram relay box MCP4

Scale:
Date 23.02.16
Sign.: KS

Revision
A: 07.11.16
B:
C:
D:
E:

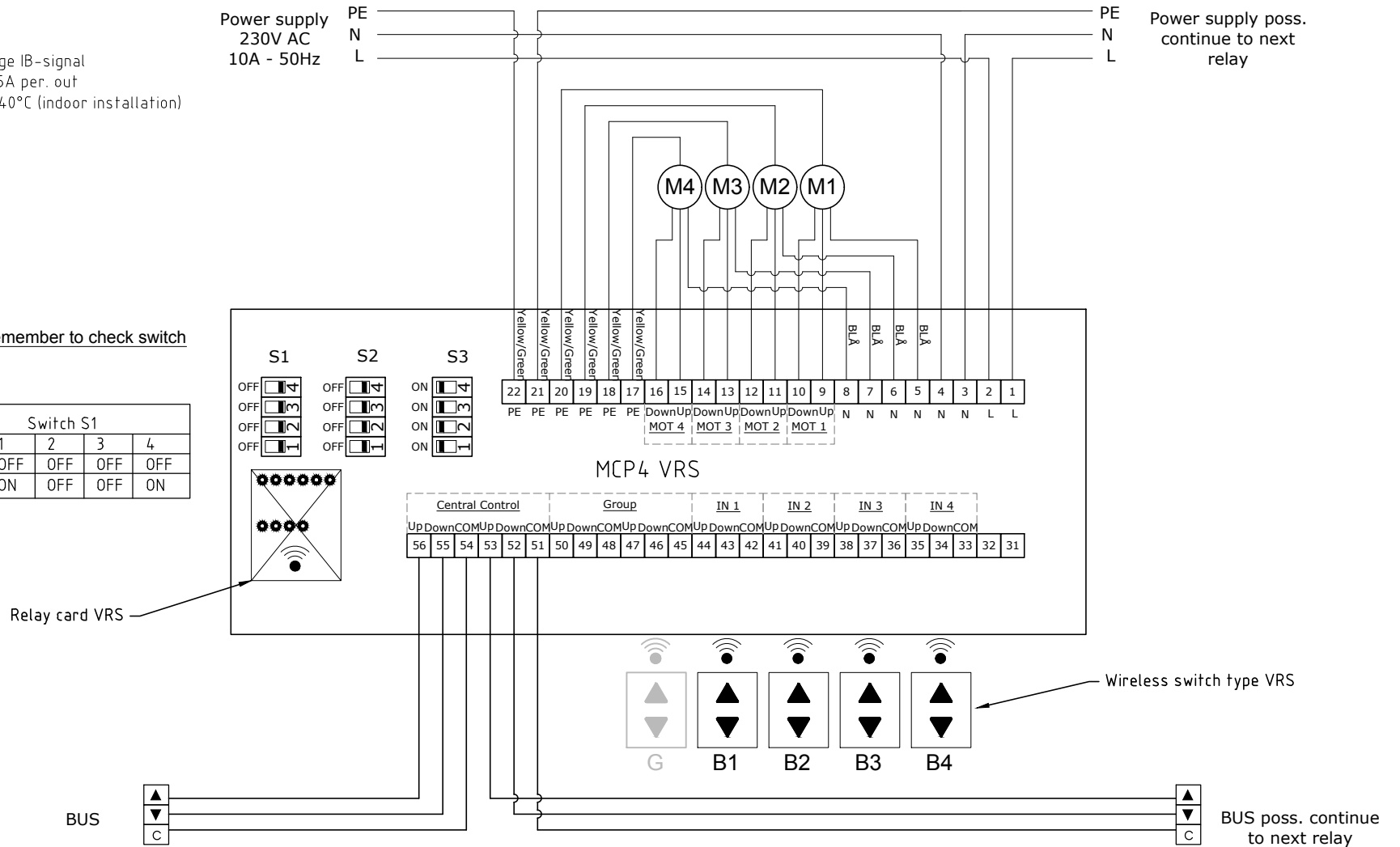
Product nr.:
STANDARD
Drawing nr
120B-03A

- Data:
1. Voltage: 230V./ 10A 50Hz
 2. Control voltage: Low voltage IB-signal
 3. Motor out max. 250V. / 3,15A per. out
 4. Temperature interval: 0 - 40°C (indoor installation)

Notice!
Motors may not be connected in parallel!
One motor per output only!

Notice! Remember to check switch settings!!

Switch S1				
Mode	1	2	3	4
Normal	OFF	OFF	OFF	OFF
IDS	ON	OFF	OFF	ON



Control station must be supplied from separate group.
The installation must be performed in accordance with the machine directive.

		Marketed by:	
		Blendex A/S Fischer-international	
Product: Principle diagram Sunsync 120B			Revision
Type	Scale:	A: 07.11.16	
Connection diagram relay box MCP4 + VRS card for wireless switches	Date 23.02.16	B:	
	Sign.: KS	C:	
Product nr.:			STANDARD
Drawing nr.			
			120B-04A

Data:

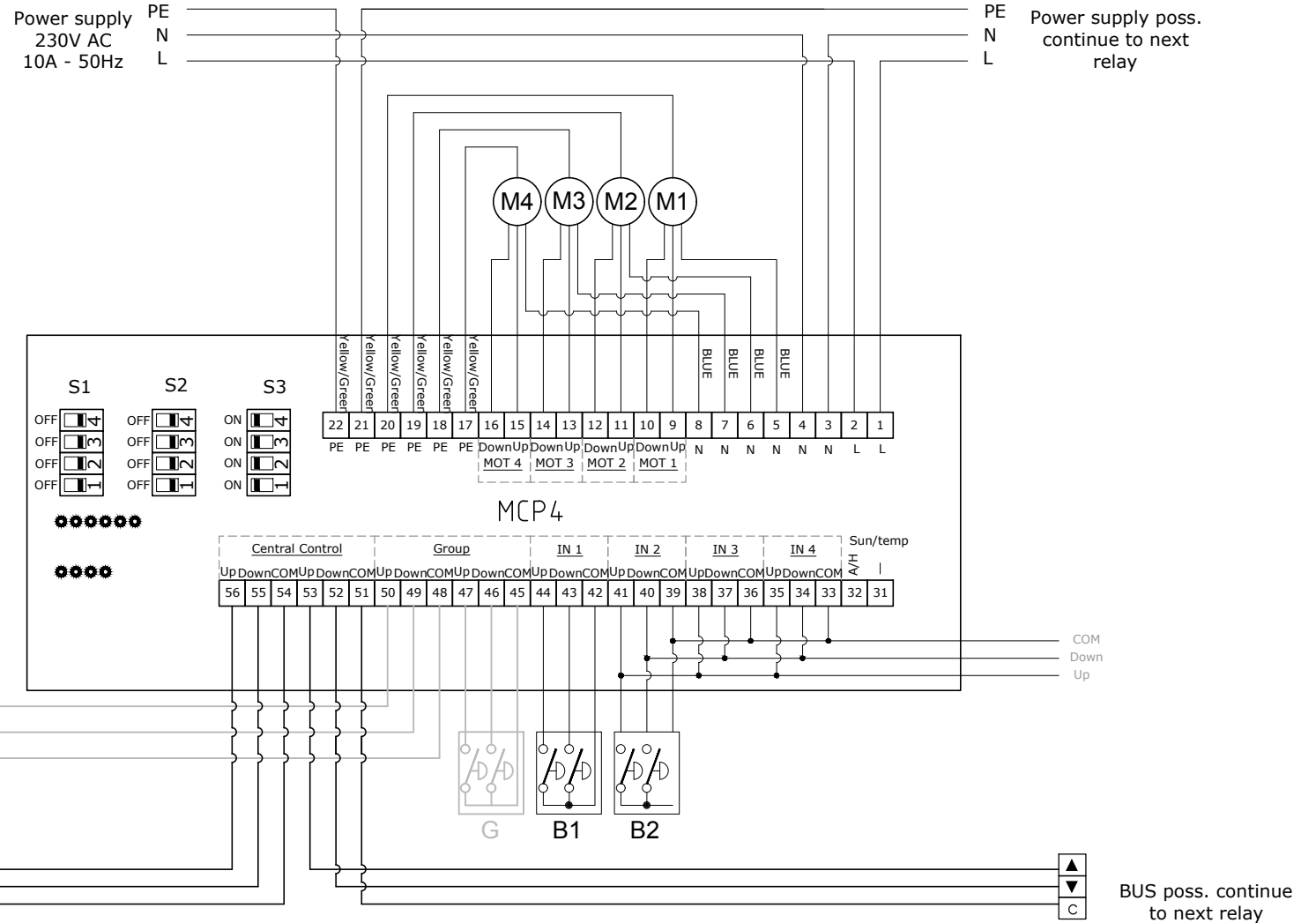
1. Voltage: 230V / 10A 50Hz
2. Control voltage: Low voltage IB-signal
3. Motor out max. 250V. / 3,15A per. out
4. Temperature interval: 0 - 40°C (indoor installation)

Notice!

Motors may not be connected in parallel!
One motor per output only!

Notice! Remember to check switch settings!!

Switch S1				
Mode	1	2	3	4
Normal	OFF	OFF	OFF	OFF
IDS	ON	OFF	OFF	ON



Control station must be supplied from separate group.

The installation must be performed in accordance with the machine directive.

sunsync™

Marketed by:

Blendex A/S
Fischer-international

www.blendex.dk
www.fischer-international.de

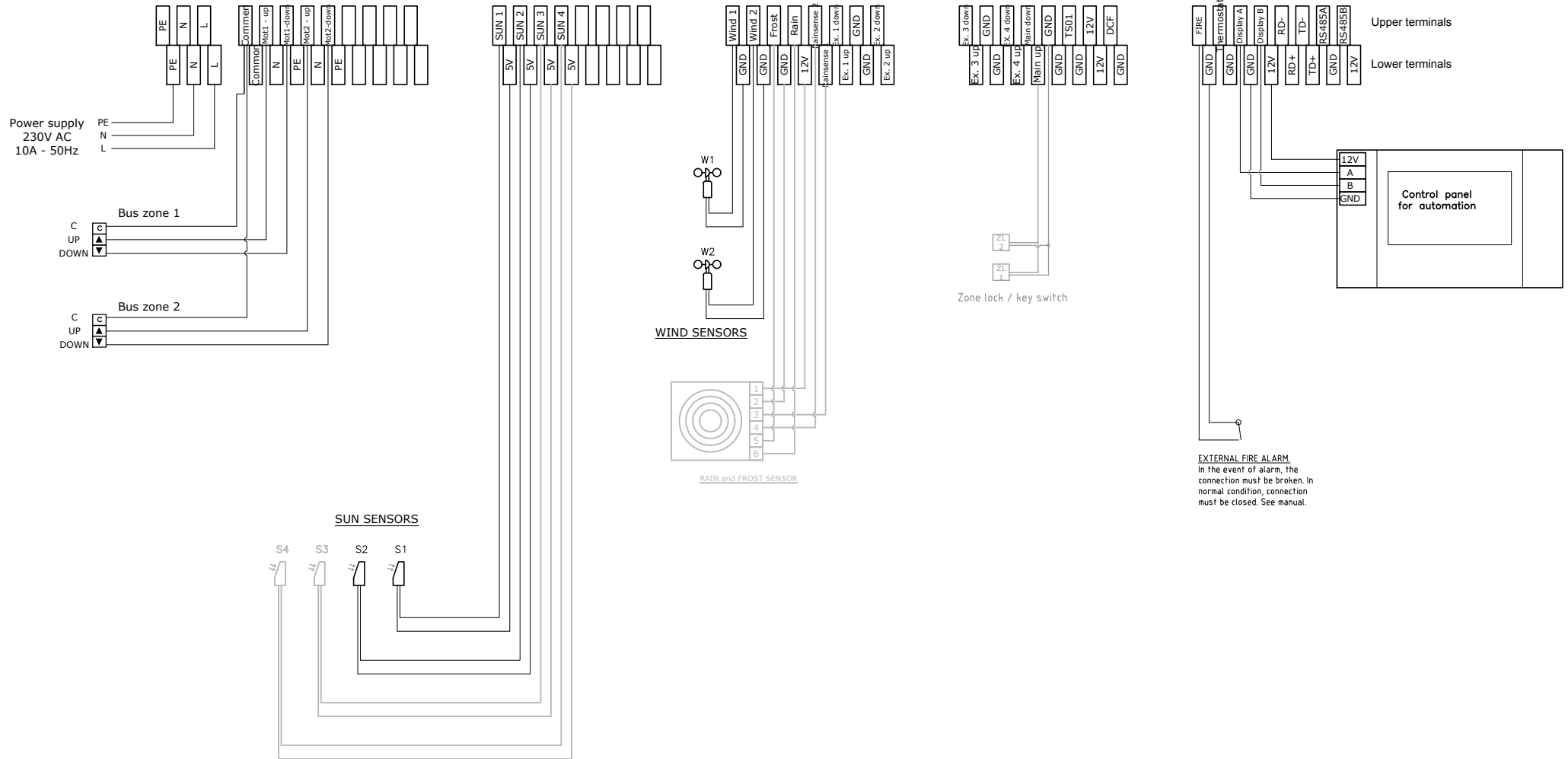
Product: Principle diagram Sunsync 120B

Type
Connection diagram MCP4
1 switch to several motors

Scale:
Date 23.02.16
Sign.: KS

Revision
A: 07.11.16
B:
C:
D:
E:

Product nr.:
STANDARD
Drawing nr
120B-05A



EXTERNAL FIRE ALARM
 In the event of alarm, the connection must be broken. In normal condition, connection must be closed. See manual.

Control station must be supplied from separate group.
 The installation must be performed in accordance with the machine directive.

sunsync™

Marketed by:

Blendex A/S
 Fischer-international

www.blendex.dk
www.fischer-international.dk

Product: Principle diagram Sunsync 120B

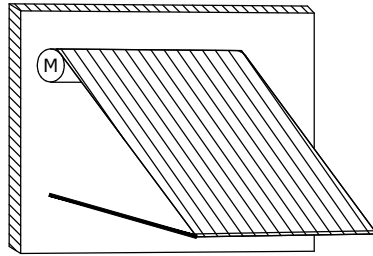
Type
 Connection diagram MCP4
 1 switch to several motors

Scale:
 Date 23.02.16
 Sign.: KS

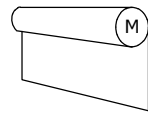
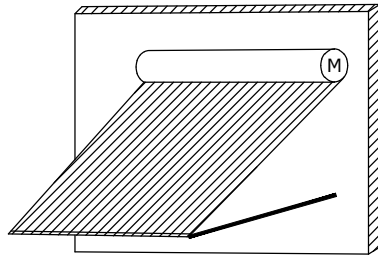
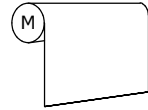
Revision
 A: 07.11.16
 B:
 C:
 D:
 E:

Product nr.:
 STANDARD
 Drawing nr
 120B-06A

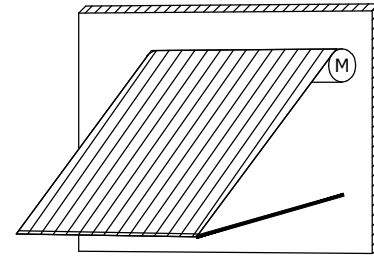
Awning



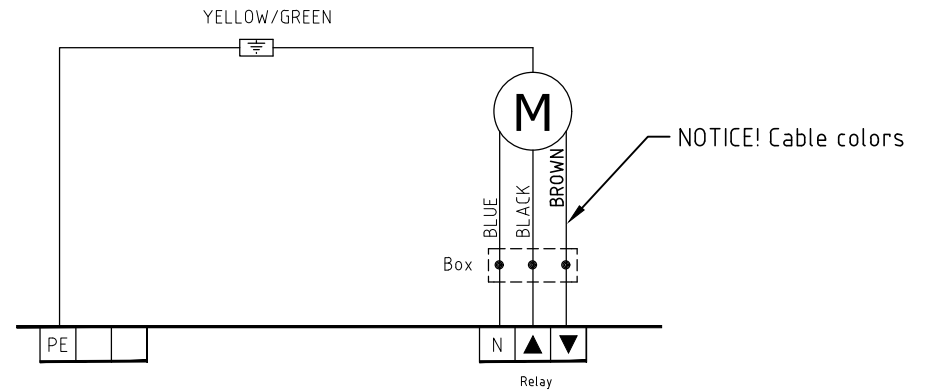
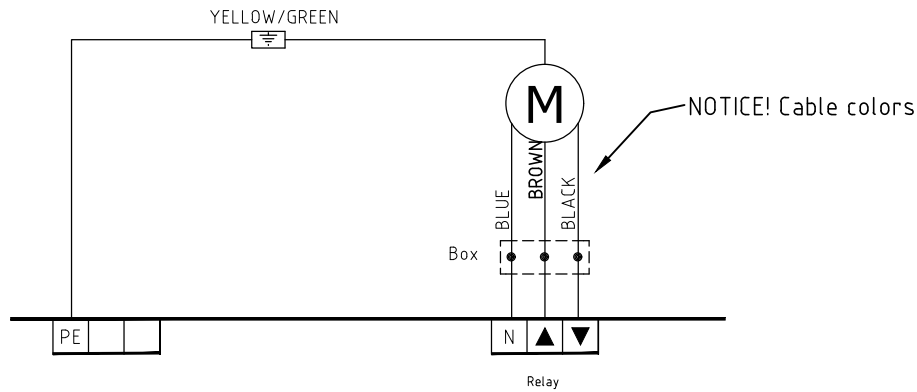
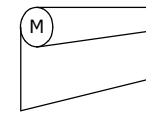
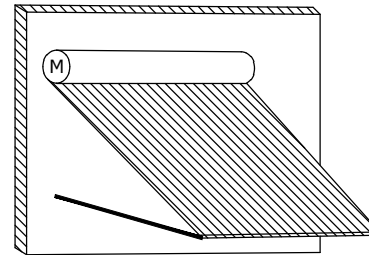
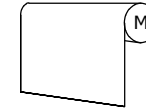
Screen



Awning



Screen



sunsync™

Marketed by:

Blendex A/S
Fischer-international

www.blendex.dk
www.fischer-international.de

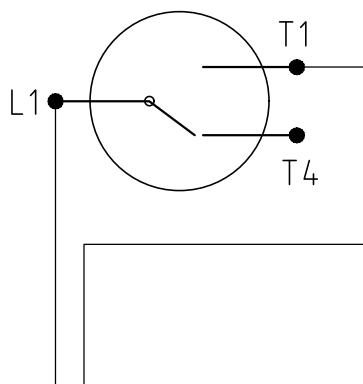
Product: Principle diagram Sunsync 120B

Type
Motor connection in relay
Examples, different motor sides etc

Scale:
Date 23.02.16
Sign.: KS

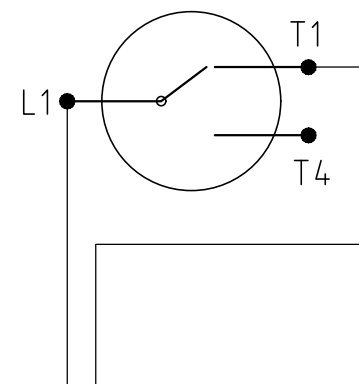
Revision
A: 07.11.16
B:
C:
D:
E:

Product nr.:
STANDARD
Drawing nr
120B-07A



To control central

Zone lock / key switch in normal position



To control central

Zone lock / key switch in blocked position
Lock excl. Blendex

sunsync™

Marketed by:

Blendex A/S
Fischer-international

www.blendex.dk
www.fischer-international.dk

Product: Principle diagram Sunsync 120B

Revision

Product nr.:

Type

Scale:

A: 07.11.16

STANDARD

Connection diagram Zone lock /
Key switch

Date 23.02.16

C:

Drawing nr

Sign.: KS

D:

120B-08A

E: